

HDP Pro Getting Started



Apple, Apple Logo, Mac, the Mac logo, FinalCut Pro, Macintosh, are trademarks of Apple Computer Inc. Microsoft, Windows and Windows Logos are registered trademarks or trademarks of Microsoft Corporation. All other trademarks are the property of their respective owners.

*Specifications and package contents are subject to change without notice.

for Mac



A. Quick Check

After opening the box please examine all included materials. Your HDPro should consist of:

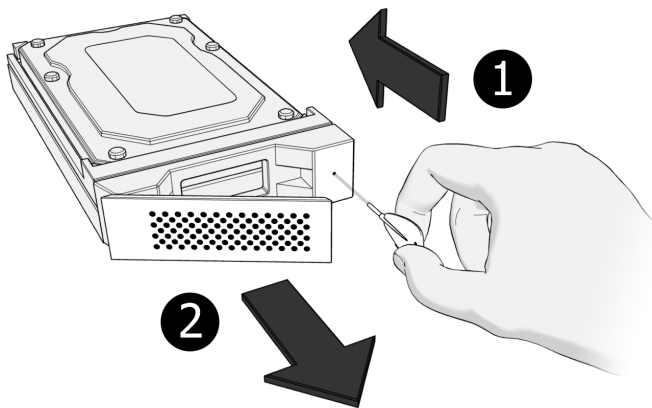
- HDPro Unit x 1
- PCI-E or PCI-X card x 1
- PCI Express Cable x1
- Drive Trays x8
- Installation CD
- Power Cord x1



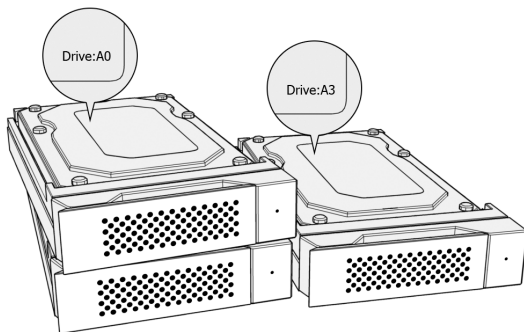
Power Cords x2 for dual powered unit.

B. Installing Drives

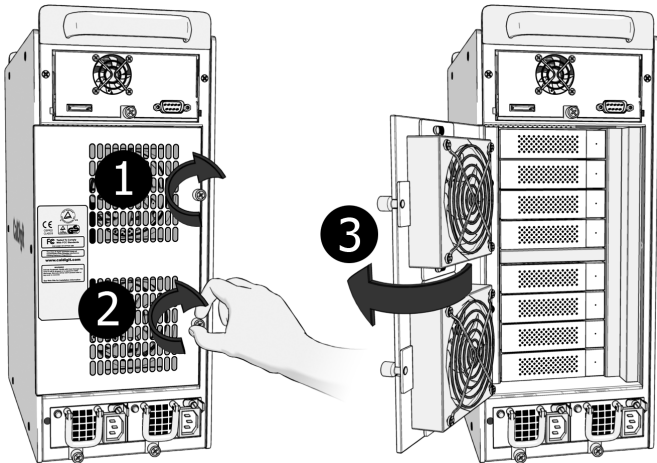
1. First pop open the drive locking arms by pushing the included key into the drive tray key slot, as shown below.



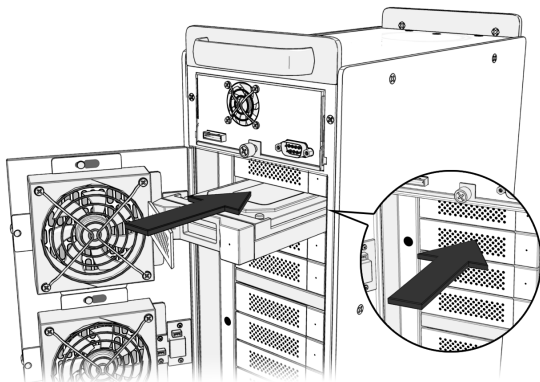
2. Take note of the number on each drive.



3. Open the back of the HDPro using the thumbscrews on the right side of the back door.

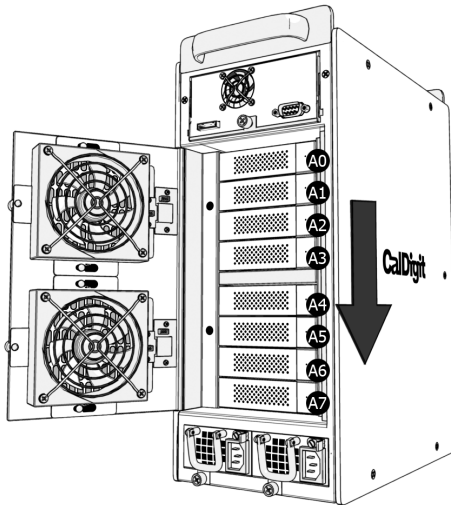


4. According to the above mentioned drive number (step 2), start sliding the drives into the unit, starting at the top (drive number A0). Drives should be slid in horizontally.

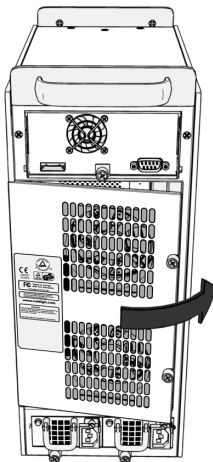


5. When the drive cannot be pushed in any further, push the drive-locking arm inwards until it clicks into place.

6. Top to bottom, use the same procedure to insert the remaining drives with drive number A0 being at the top, number A1 second down... all the way to number A7 at the bottom.

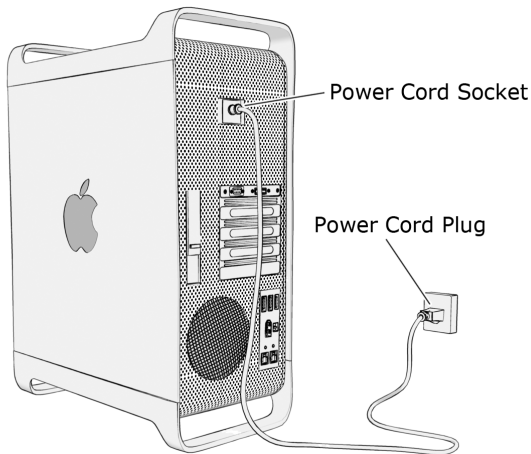


7. When all the drives have been populated, check they are all flush, then use the thumbscrews to close the rear door.

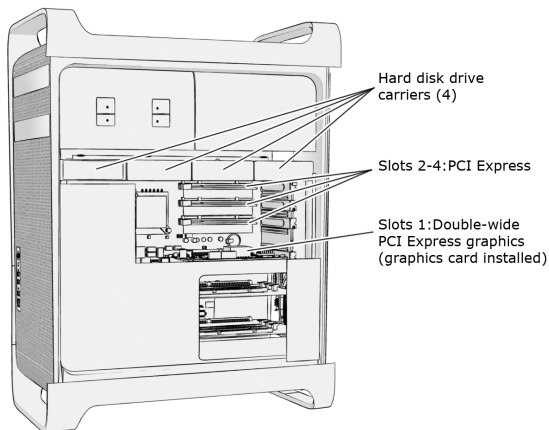


C. Installing the PCI card

1. Turn off your computer and unplug the AC powercord from the wall or power bar.



2. Remove the cover from your computer.
3. Locate an available PCI-E / PCI-X slot on the motherboard.



4. Always put the PCI card in Slot #3 or Slot #4 to obtain the optimal performance.

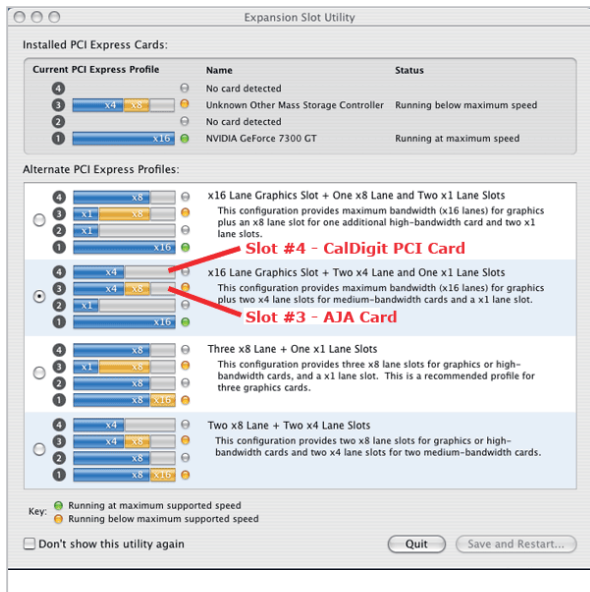
PLEASE NOTE:

If you have a MacPro Dual Core 2.0GHz; 2.66GHz; 3.0GHz or a MacPro Quad Core 3.0GHz and have an AJA or Blackmagic Design capture card installed on your computer, please follow these instructions:

Launch Expansion Slot Utility at the following path:
/System/Library/CoreServices

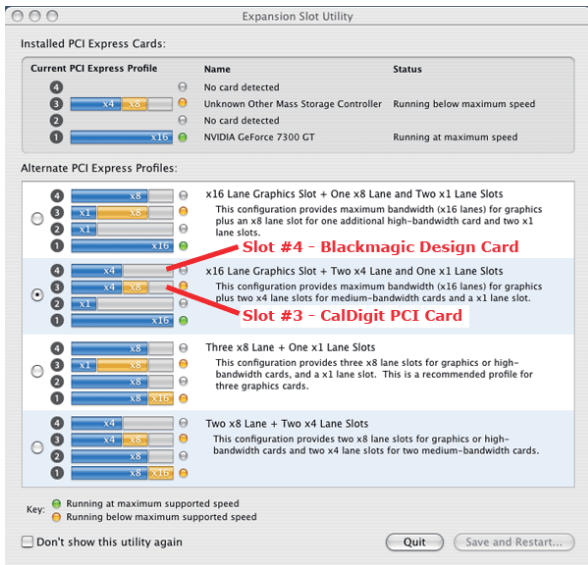


PCI card + AJA: CalDigit PCI card should be placed in slot #4 and AJA card should be placed in slot #3.

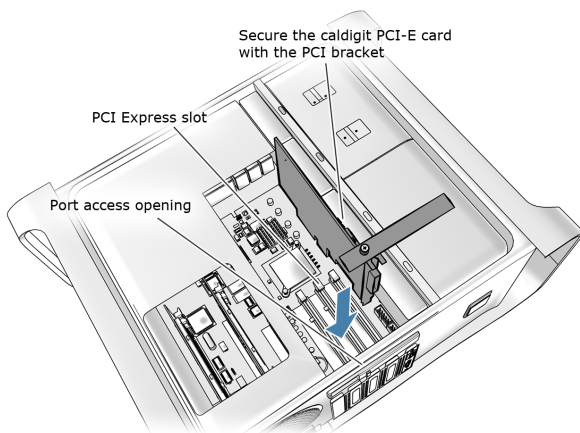




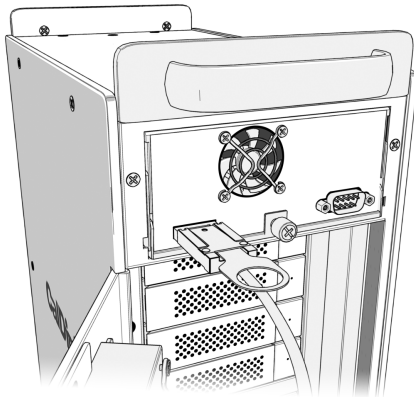
PCI card + Blackmagic Design: CalDigit PCI card should be placed in slot #3 and Blackmagic Design card should be placed in slot #4.



5. Hold the PCI-E / PCI-X card firmly by the outside edge, push it into the slot, making sure the PCI connections fit outside the computer.



6. Attach the PCI Express Cable from the tower PCI connection to your HDPro.



D. Installing RAID Shield

1. Press the power switch to turn on the HDPro. It is important to remember that the HDPro should be turned on for 15 seconds before you start up your computer.
2. Insert the provided CD into the computer DVD/CD drive.
3. CD/MAC installation/1.x/HDPro_IP_MAC_1.x.0.mpkg
(For latest driver, please go to <http://www.caldigit.com/support.asp>)
4. When installation is complete, restart the computer.

5. Your drive will appear on your desktop.



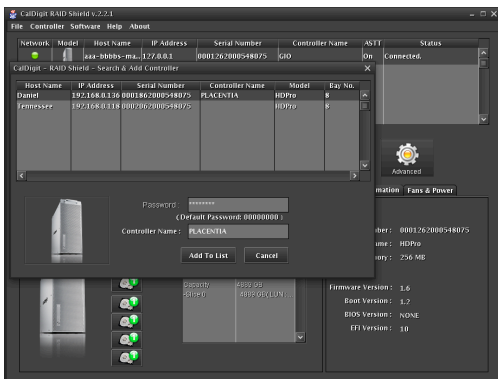
All HDPro's are preconfigured in RAID 5 with Mac drive format.

Congratulations!

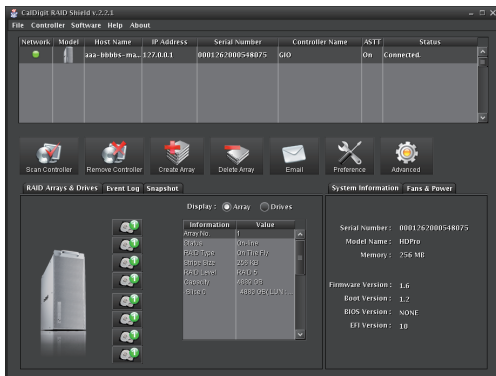
Your HDPro is ready to use. Please visit us at www.caldigit.com to register your product.

E. Using RAID Shield

1. Go to Applications / RAID Shield. Double-click "RAID Shield".
2. Click "Scan Controller". Select your HDPro. Type in the new array name. Click "Add".



3. Now the RAID Shield is showing all the detailed information about your HDPro.



The RAID Shield utility is a quick and easy way to check on the status of your HDPro but is not necessary for day to day use. If you've followed the steps outlined in this manual, your HDPro should be ready for use.

F. Shutting down the computer

When you want to shut down your HDPro, please turn off your computer; wait 20 seconds then hold the power button for 2 seconds to power it down.

for Windows



A. Quick Check

After opening the box please examine all included materials. Your HDPro should consist of:

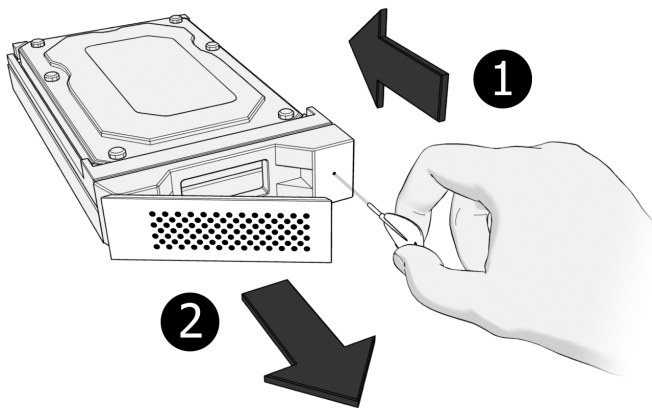
- HDPro Unit x 1
- PCI-E or PCI-X card x 1
- PCI Express Cable x1
- Drive Trays x8
- Installation CD
- Power Cord x1



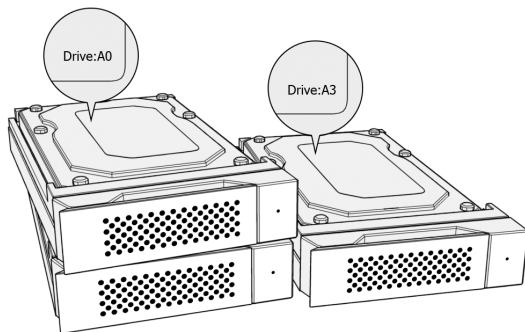
Power Cords x2 for dual powered unit.

B. Installing Drives

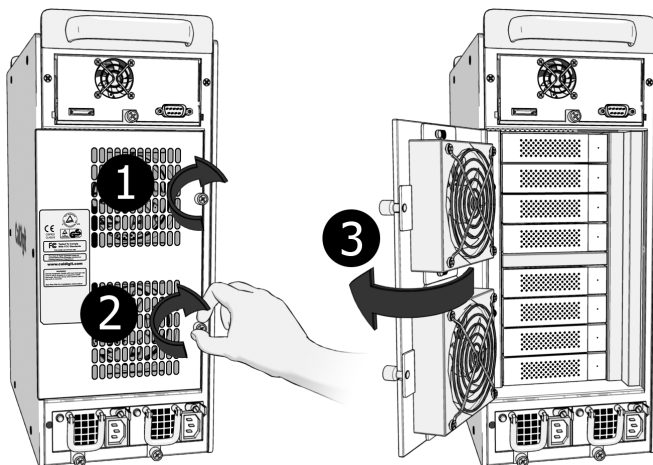
1. First pop open the drive locking arms by pushing the included key into the drive tray key slot, as shown below.



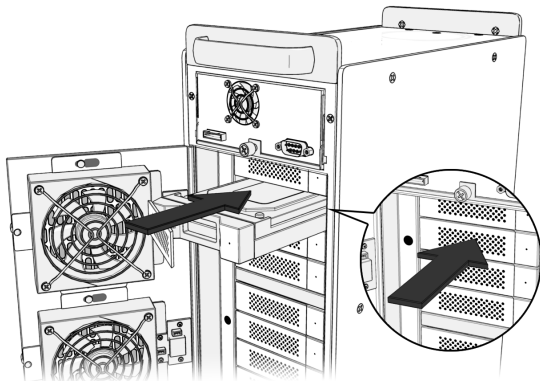
2. Take note of the number on each drive.



-
-
3. Open the back of the HDPro using the thumbscrews on the right side of the back door.

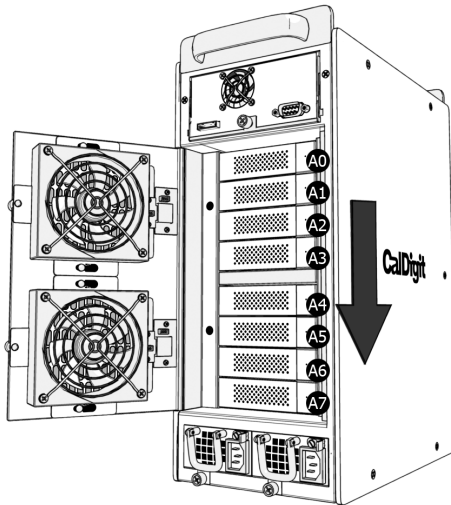


4. According to the above mentioned drive number (step 2), start sliding the drives into the unit, starting at the top (drive number A0). Drives should be slid in horizontally.

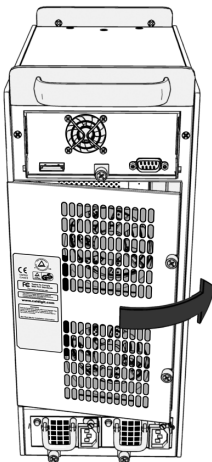


5. When the drive cannot be pushed in any further, push the drive-locking arm inwards until it clicks into place.

6. Top to bottom, use the same procedure to insert the remaining drives with drive number A0 being top, number A1 second down... all the way to number A7 at the bottom.

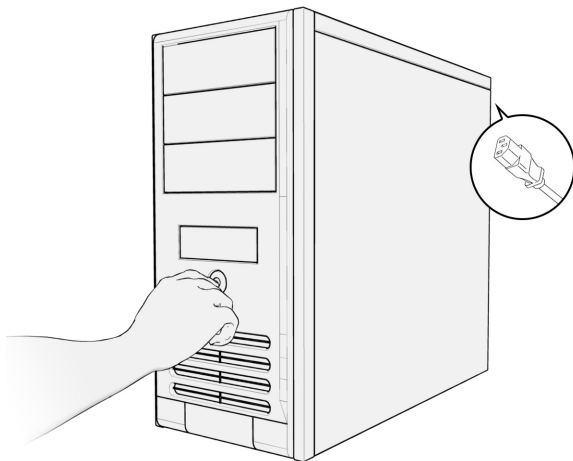


7. When all the drives have been populated, check they are all flush, then use the thumbscrews to close the rear door.

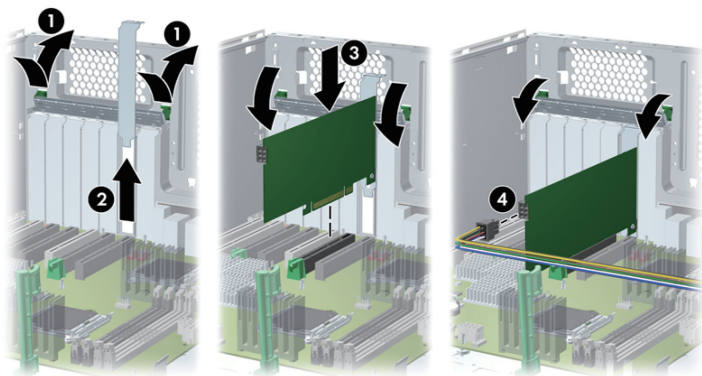


C. Installing the PCI card

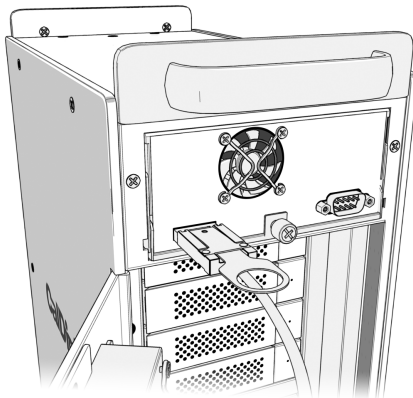
1. Turn off your computer and unplug the AC power cord from the wall or power bar.



2. Remove the cover of your computer. Hold the PCI-E / PCI-X card firmly by the outside edge, push it into the slot, making sure the PCI connections fit outside the computer.



3. Attach the PCI Express Cable from the tower PCI connection to your HDPro.

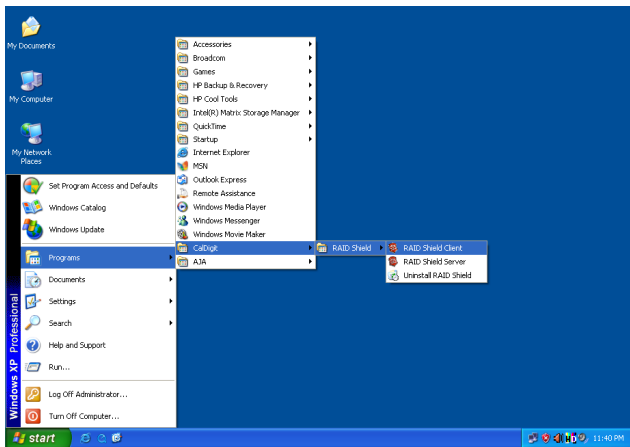


D. Installing RAID Shield

1. Press the power switch to turn on the HDPro. It is important to remember that the HDPro should be turned on for 15 seconds before you start up your computer.
2. Insert the provided CD into the computer DVD/CD drive.
3. CD/windows installation/GUI/1.x/HDPro_IP_Win_1.x.exe
(For latest driver, please go to <http://www.caldigit.com/support.asp>)
4. When installation is complete, restart your computer.

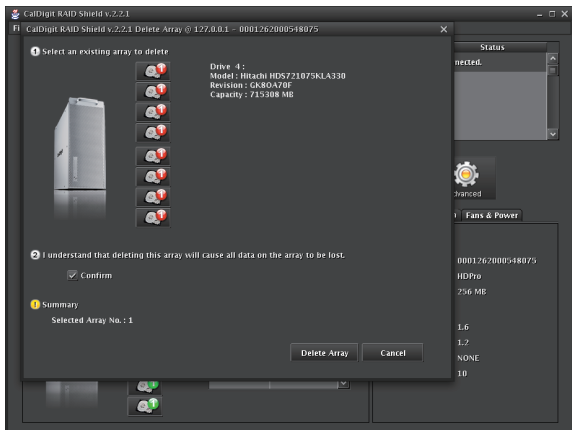
E. Launch RAID Shield

1. Launch the RAID Shield from: Programs / CalDigit / RAID Shield Client.



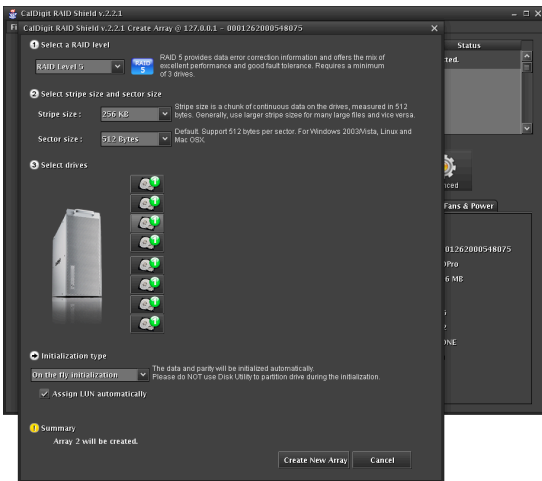
2. Click "Scan Controller". Select your HDPro. Type in the new array name. Click "Add".

3. Delete Array by selecting the array, check "confirm delete" then click "delete".



Every time you "delete array" all data in the array will be lost.

4. Create Array - RAID 5, Stripe Size 256KB, Sector Size 4096 bytes*, Select all drives, "On the fly initialization" click "create array".
(*If your HDPro is 2TB or smaller, set sector size to 512bytes)





Keep in mind, that on the fly initialization will take from five to eight hours, depending on the size of your array. Do not use the performance evaluation option to set up your HDPro. Performance evaluation will not secure your data, and is only used for testing purposes.

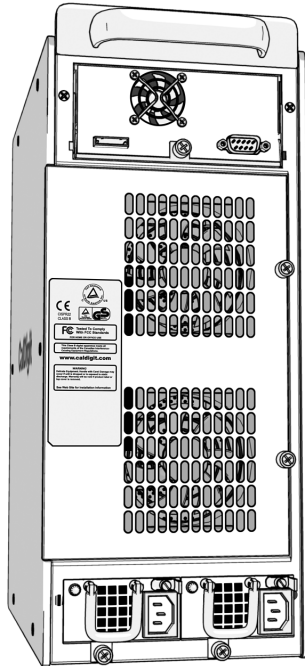
5. When the array is completed restart your computer.
6. After boot up right click on "My Computer" and chose "Manage".
7. Computer Management / Storage / Disk Management - Format new external storage.
8. When the format is complete restart the computer.
9. Congratulations, your HDPro is set-up and ready to have storage added.

F. Shutting down the computer

When you want to shut down your HDPro, please turn off your computer; wait 20 seconds then hold the power button for 2 seconds to power it down.

Thank you!

Thank you for choosing CalDigit. Please visit us at www.caldigit.com to register your product.



www.caldigit.com

©Copyright 2008 CalDigit, Inc. All Rights Reserved