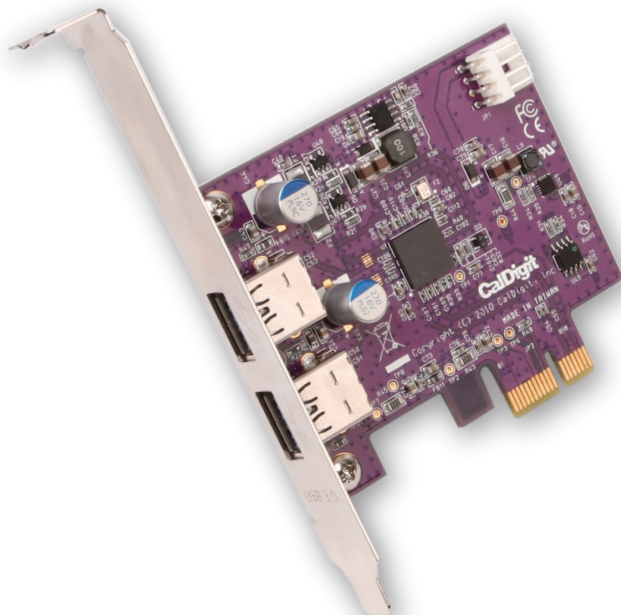


CalDigit SuperSpeed PCI Express Card



For more information visit www.caldigit.com



Fast, Reliable and Secure Storage Solutions

Apple, Apple Logo, Mac, the Mac logo and Macintosh are trademarks of Apple Inc.
Microsoft, Windows and Windows Logos are registered trademarks of the Microsoft Corporation.

All other trademarks are the property of their respective owners.

*Specifications and package contents are subject to change without notice.

Contents

Introduction	4
General Use Warnings	5
Safety Warnings	5
System Requirements	6
Installing the CalDigit SuperSpeed PCI Express Card	7
Driver Installation	9
PC	9
Mac	11
Technical Support & Warranty Information	14
Technical Support	14
CalDigit Warranty Information	14

Introduction

Thank you for purchasing the CalDigit SuperSpeed PCI Express Card. This dual-port card plugs into a PCIe slot on your host computer.

Designed for use with CalDigit certified devices, the CalDigit SuperSpeed PCI Express Card is the first to offer USB 3.0 connectivity to both Mac and PC laptops with an available PCIe slot. For the first time, Mac users can utilize USB 3.0 due to a special driver that has been developed by CalDigit. This two-port card enables the use of next generation USB technology, capable of speeds up to 5Gbps.

The SuperSpeed Card is optimized for use with CalDigit certified products such as the CalDigit AV Drive. The SuperSpeed Express Card is compatible with modern Windows systems. CalDigit does not guarantee USB 3.0 performance on all Macs or when used in conjunction with third party products. The driver has been optimized for CalDigit certified products. The SuperSpeed Card is backwards compatible with USB 2.0 (connection to USB 2.0 yields USB 2.0 performance).



General Use Warnings

Please make sure you read this manual thoroughly before using the CalDigit SuperSpeed PCI Express Card.

Do not attempt to force the Express Card into the slot or force any of the connections into it. Doing so can result in serious damage to the product.

Avoid using the CalDigit SuperSpeed PCI Express Card in extreme environments as it will increase the likelihood of premature failure. A safe temperature is between 40F – 95F.

Do not attempt to disassemble or modify the Express Card in anyway. Doing so can result in damage of the unit, safety hazards, and will also void your warranty.

Please do not get the CalDigit SuperSpeed PCI Express Card wet as it can cause electrical shock and fire.

Minimum System Requirements



Mac

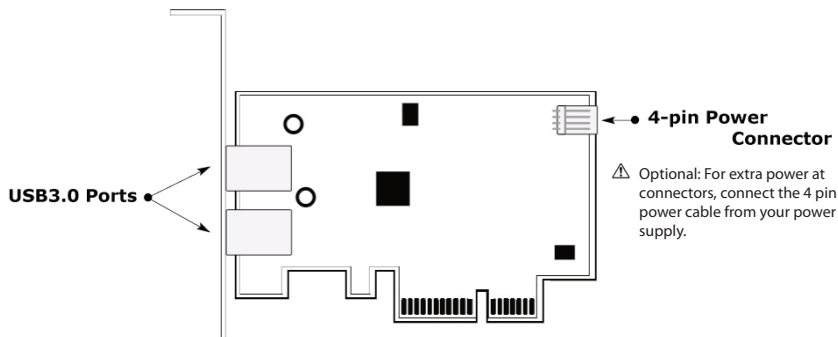
- OS X 10.5 or higher
- Mac Pro with available x1 (lane) PCIe slot
- 256 MB RAM (512MB recommended)



PC

- Windows XP/Vista/7
- PC with available x1 (lane) PCIe slot
- 256 MB RAM (512MB Recommended)

Express Card Diagram

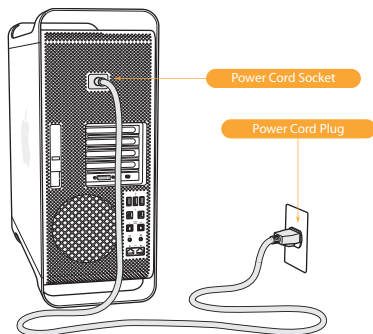


Specifications

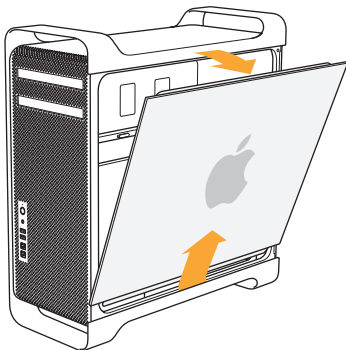
Maximum Data Transfer Rate	5.0 Gigabits per Second
Interface to PC	PCI Express 2.0 x 1
External Ports/Connections	2 USB 3.0 Ports (backwards compatible)
Operating System Support	Windows XP/Vista/7 and Mac OS X
Dimensions	80 x 68.5 x 1.6mm (L x W x H)
Operating Temperature	32F ~ 104F
Storage Temperature	-4F ~ 140F
Operating Humidity	0% ~ 80% RH, non-condensing

Installing the CalDigit SuperSpeed PCI Express Card

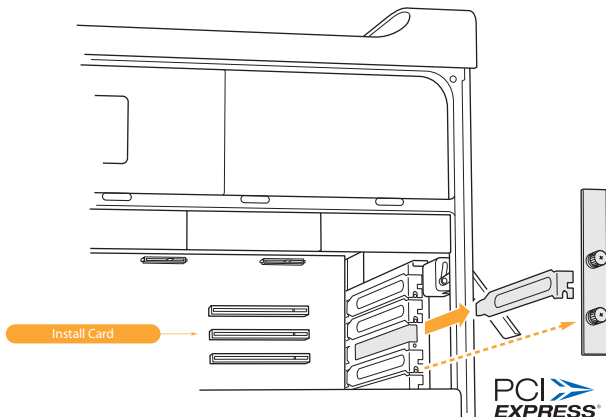
- 1 To install the **CalDigit SuperSpeed PCI Express Card**, please make sure the computer is turned off. Unplug the power cord and wait 5 to 10 minutes allowing the computer's internal components to cool.



- 2 Open up the computer. If you are using a MacPro, please hold the side access panel and lift the latch on the back of the computer. Remove the access panel. If you are using a PC, please make sure there is an available PCIe slot and remove any necessary screws.



- 3 Install the **CalDigit SuperSpeed PCI Express Card** into an empty PCIe slot and make sure it is securely installed. For the best performance make sure the PCIe slot is PCIe version 2.0 or later.



- 4 Close the computer and connect the power cord.
- 5 Install the Driver. See the Driver Installation section of this manual for further information.

Driver Installation

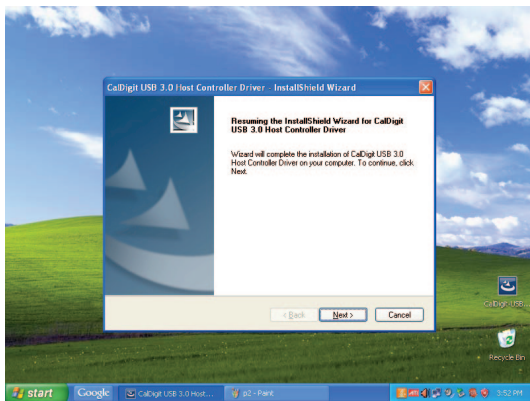
Prior to using the CalDigit SuperSpeed PCI Express Card, you must download and install the appropriate driver (note which version OS you have).

Drivers can be found at <http://www.caldigit.com/support.asp>

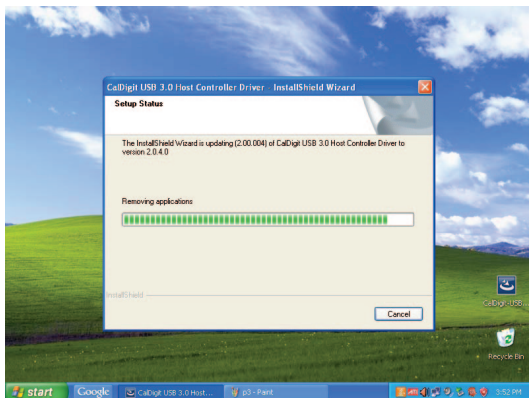


PC

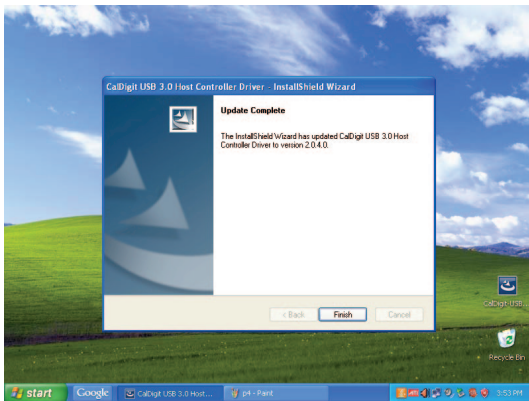
- 1 Download and run the appropriate driver file.
- 2 Select SuperSpeed PCI Express Card.
- 3 Select Windows Driver to start installation wizard.
- 4 Select next to continue.
- 5 Read through the End User License Agreement, select Accept to agree to the terms, and click next to continue with the wizard.
- 6 Click next to continue.



- 7 Select Install to start the installation.



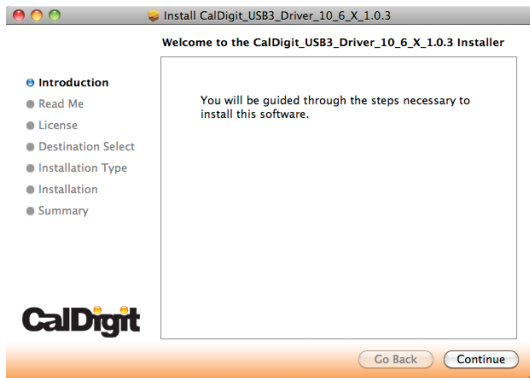
- 8 After installation has been completed, select Finish to close the Wizard.



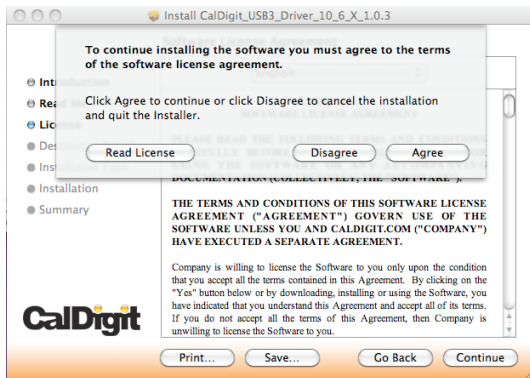
- 9 The CalDigit SuperSpeed PCI Express Card will now appear in device management, if the CalDigit SuperSpeed PCI Express Card has been installed.

MAC

- 1 Download and run the appropriate driver file.
- 2 The installer will open, click Continue.



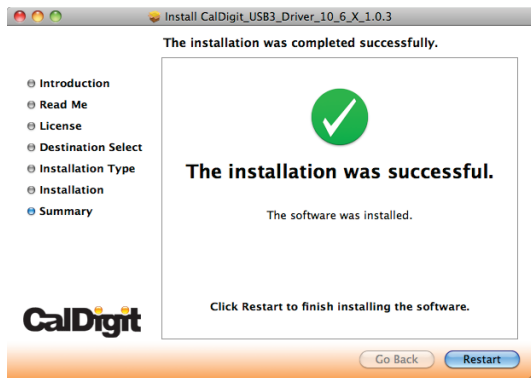
- 3 The Software License Agreement will appear. Select Continue. You must accept the License agreement to proceed with the driver installation.



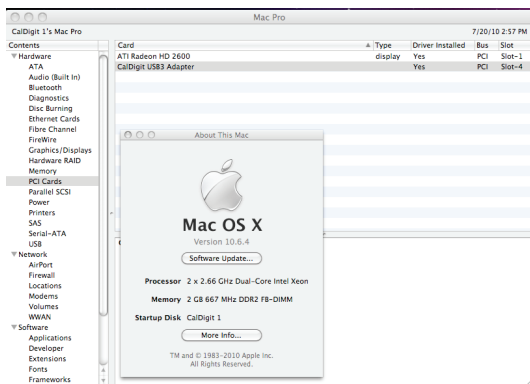
- 4 Select the destination where you want to install the driver then click Continue. Always use the same volume as the OS. Then select Install. A warning will appear stating that you must restart your computer once the driver is installed. Select Continue installation to proceed.



- 5 After the software has finished installing, select Restart to finish the installation process.



- 6 Once your computer has restarted, you will be able to see the CalDigit SuperSpeed PCI Express Card on your System Profiler.



Technical Support & Warranty Information

Technical Support

If you run into any issues while installing your CalDigit SuperSpeed PCI Express Card please contact CalDigit Technical Support:

support@caldigit.com
www.caldigit.com/support.asp
1-714-572-6668

When contacting CalDigit Technical Support, make sure to be at your computer and have the following information available:

- Your serial number
- Operating system and version
- Computer brand and model
- Other devices attached to your computer

You can also post on the CalDigit forum at the Creative Cow:
www.creativecow.net.

CalDigit Warranty Information

For detailed CalDigit warranty information please see the CalDigit website:
www.caldigit.com/rma/Limited-Warranty.pdf

CalDigit SuperSpeed PCI Express Card Manual v1.4

www.caldigit.com

© 2010 CalDigit, Inc. All Rights Reserved